

# Masterplan Ems 2050

## Tidal polder Coldemüntje Restoration of tidal wetlands

Climate adaptation in deltas II: Wetland restoration

28. June 2023

# Tidal area of the Ems today - issues



- Slit problem (fluid mud)
- and low water quality



## Canalisation

- Deepening
  - Straightening
- > Large tidal range, with pronounced flood current
- Dykes and summer dykes
  - Bank enforcements

# Master Plan Ems 2050?

Tidal area of the Ems in a **bad status** (Natura 2000, WFD)

EC infringement procedure

Avoid?!

Objectives of the Masterplan Ems 2050 (Ecology and economy):

1. Resolving the slit problem
2. Improving water quality
3. **Improving estuary habitats (5 km<sup>2</sup>+x)**
4. Protecting (Grass)birds and their habitats (2 km<sup>2</sup>)
5. Maintaining the Ems as an efficient federal waterway

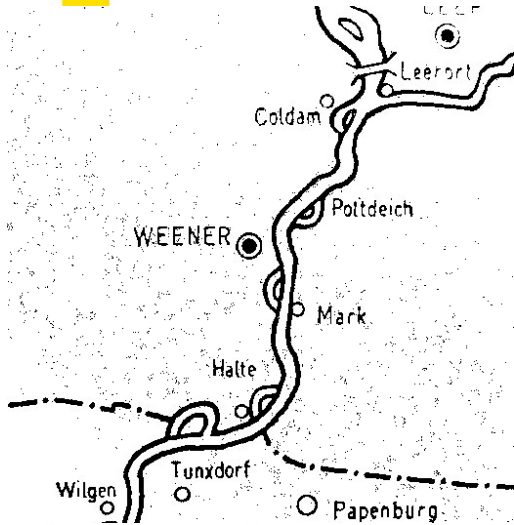
Financing:

Federal state Lower Saxony and Federal republic Germany



Administration,  
conservation associations,  
largest company relying on  
the waterway

# Ems and tidal polder Coldemüntje



**Historic development of the Ems and the flow loop near Coldemüntje**

[Ostfriesische Landschaft 2015, Preussische Landesaufnahme 1898]



1939 [Archiv Rubach u. Partner], 1962, 2015 [LGLN]

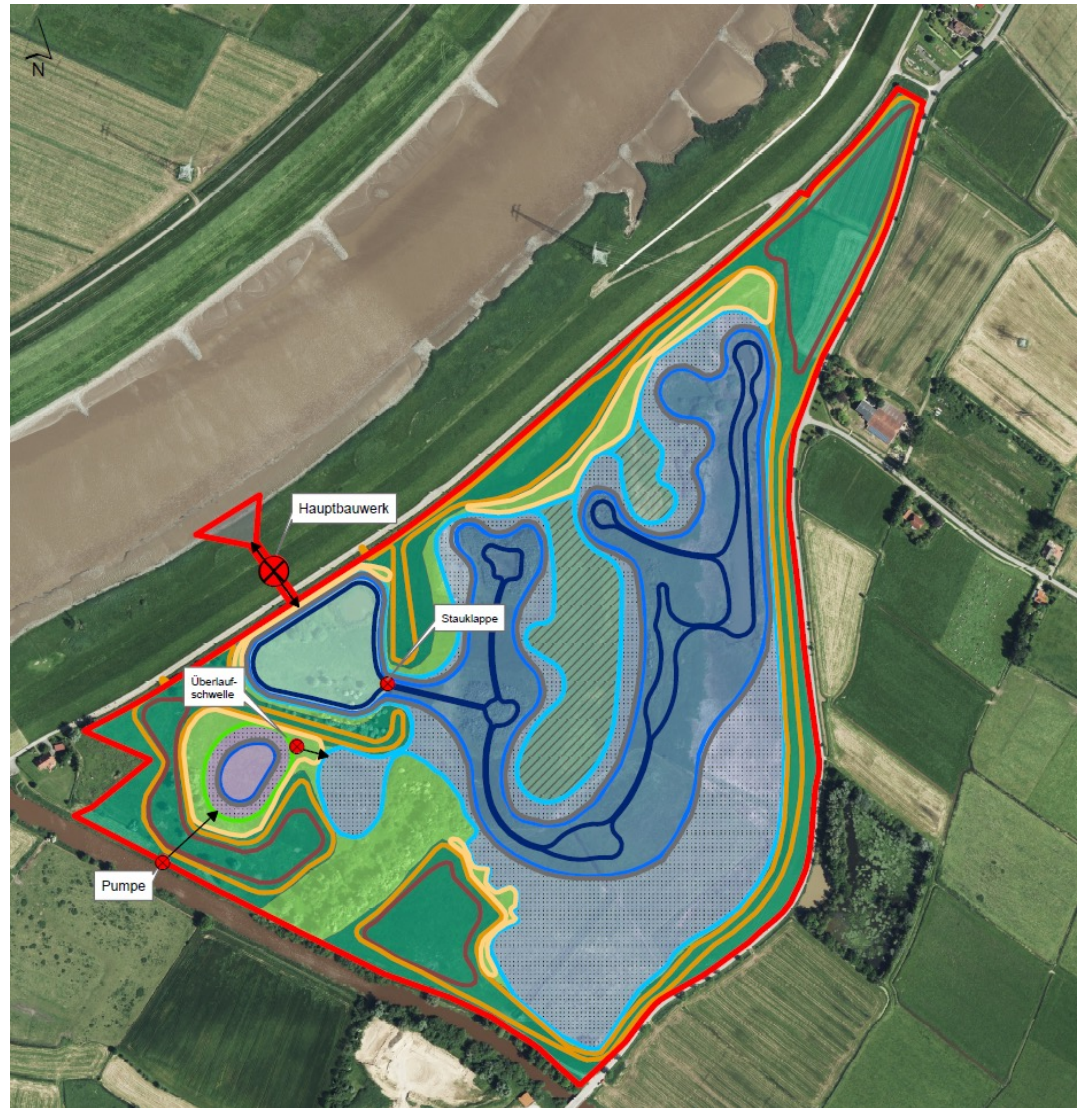
# Action plan

Passage structure,  
sedimentation basin,  
overflow threshold with weir flap  
to **reduce entry of sediments**  
in order to prevent fast siltation  
(to be completed 2024)

**Tidal system**  
(tidal creek, mudflats,  
wetland)  
(to be completed 2023)

**Freshwater pond**  
(compensation)  
with irrigation pump  
(to be completed 2023)

**Costs ~13.5 Mio €**



# Challenges

## Unanimity among contractual partners

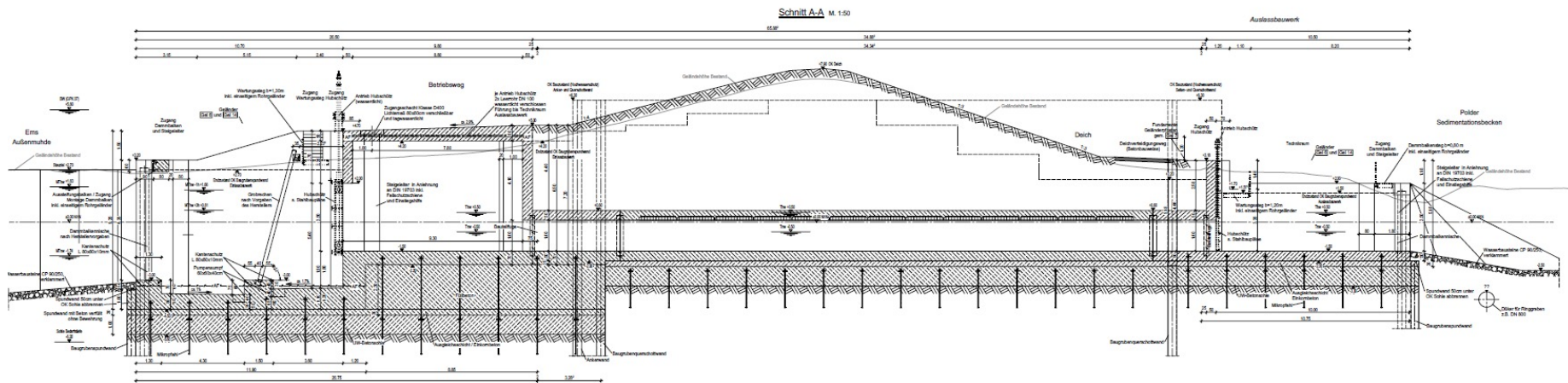
**Area procurement** (only if owners are willing to sell, not represented in the contract):

- obtain the area and clear compensation obligations
- where to put the excavated soil?
- > two tries needed to obtain the **permit**



## Engineering structures

- resolving the slit problem
- ensuring dyke safety
- keeping it „simple“ for operation and entertainment



# Challenges



## Earthwork

- Planning: Diversity of the types of soil and the concept of further use
- Building: **Clay soil** (processability in the construction area, difficulties improving nearby grassland)



## Public relation

- **Acceptance** and information, time horizon 2050





Still constructing  
**Thank you very much for your  
Attention!**

**Any Questions?**



FÜR MENSCH UND UMWELT. FÜR NIEDERSACHSEN



**Niedersachsen**