

**CITISYSTEM**

Good Practices City of Mechelen, BELGIUM

Loes Vandecasteele

Project coordinator CITISYSTEM

loes.vandecasteele@mechelen.be



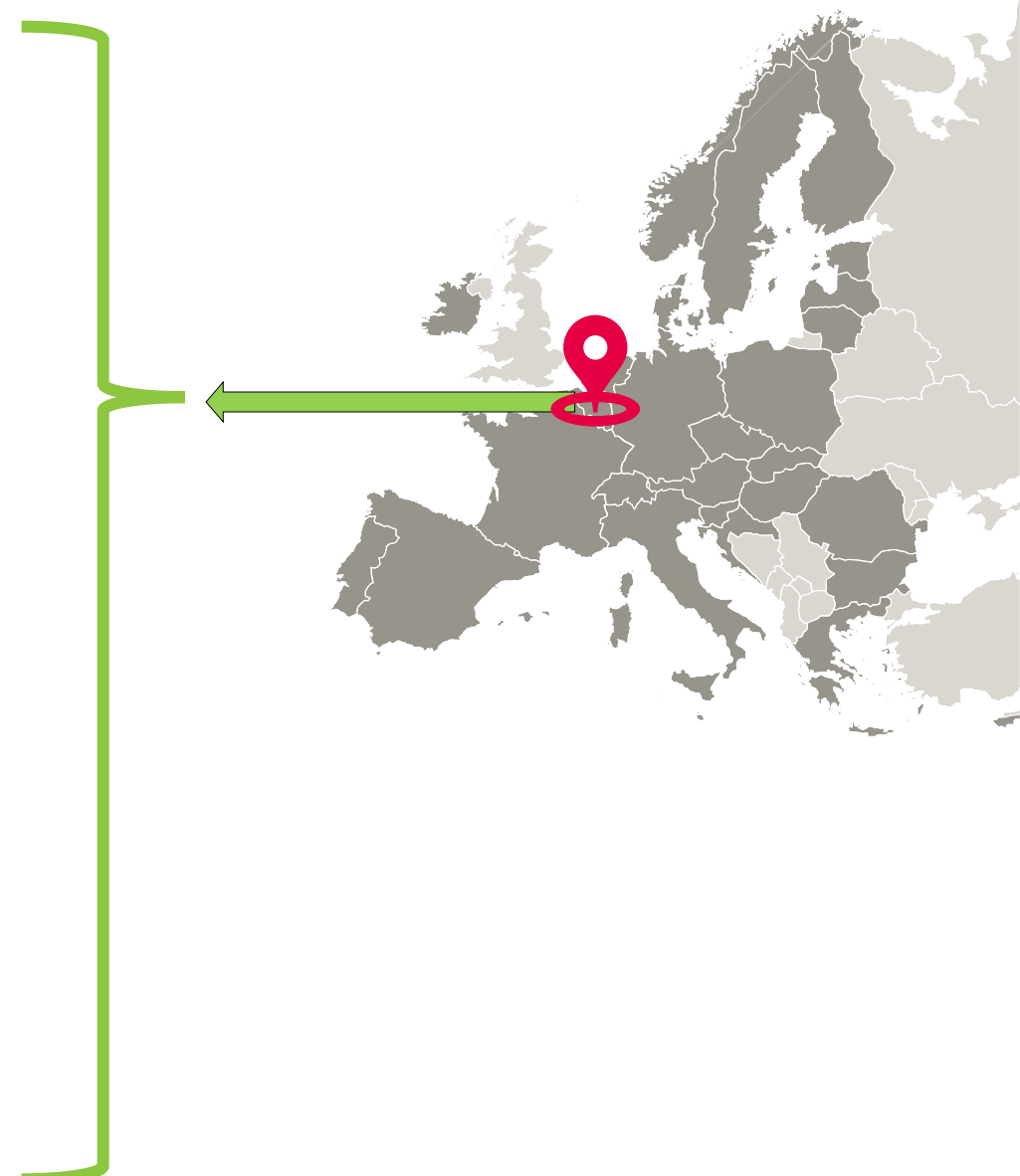
Composting at home



CITISYSTEM



GOOD PRACTICES

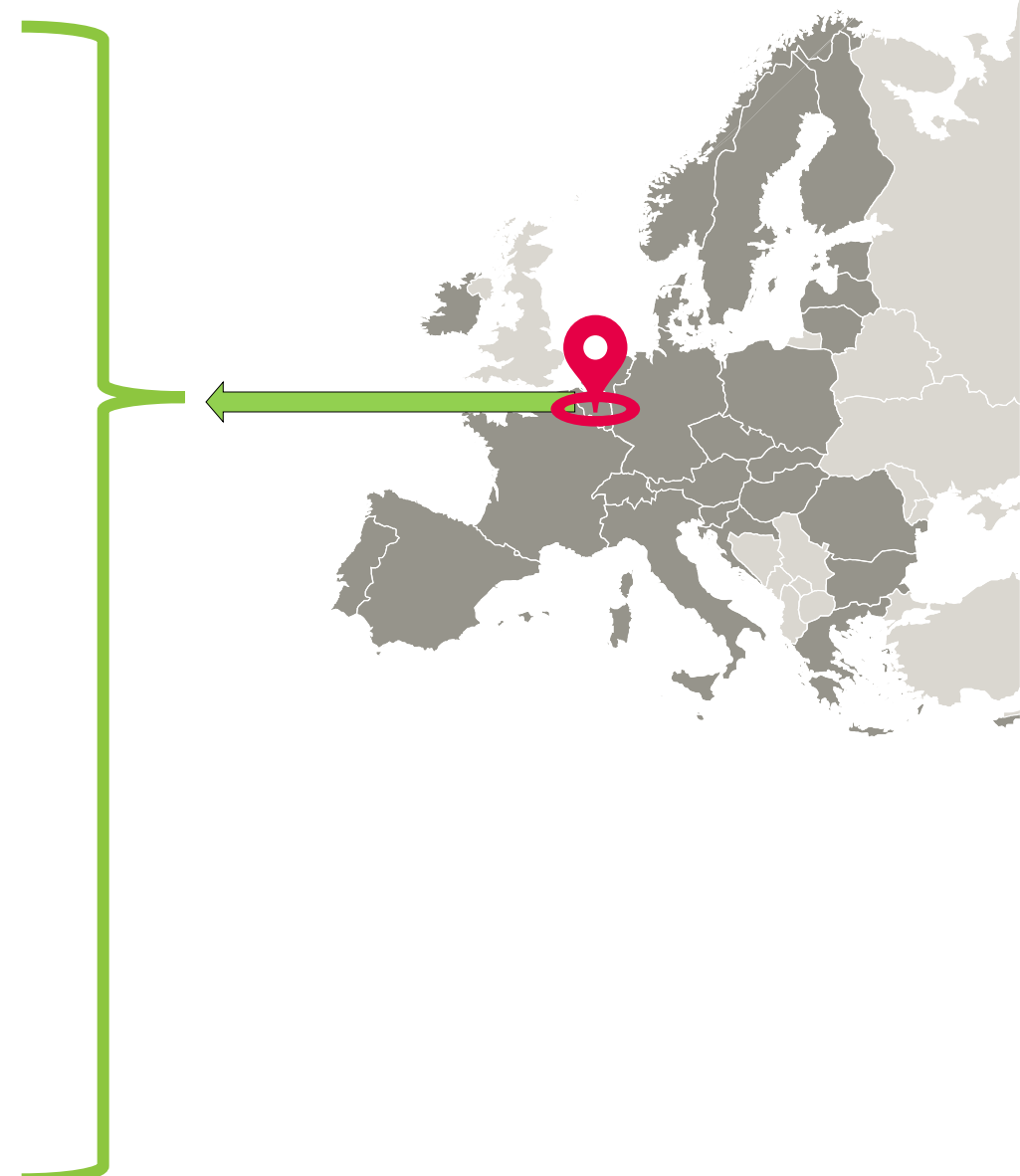
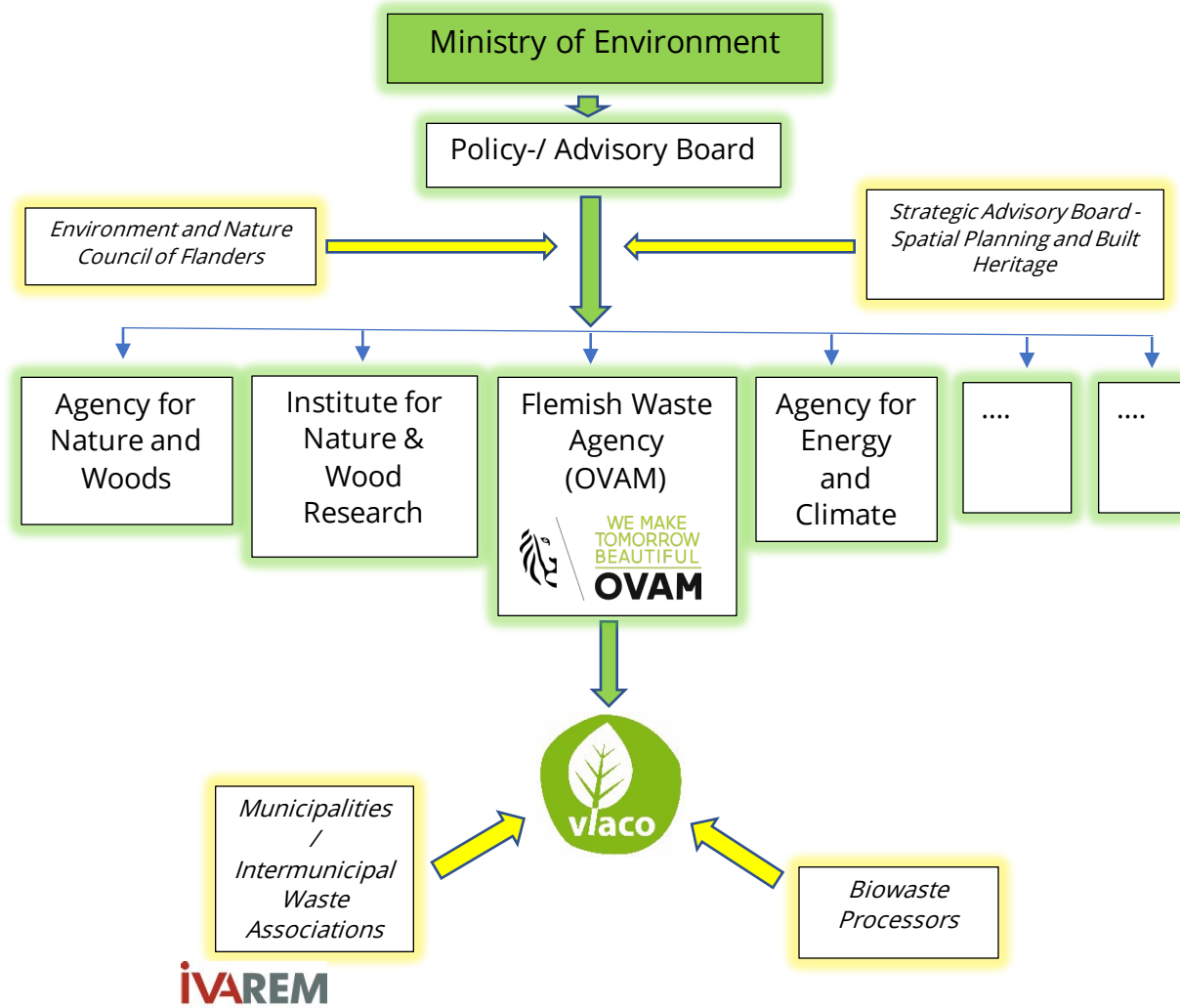


Intermunicipal waste company IVAREM



IVAREM





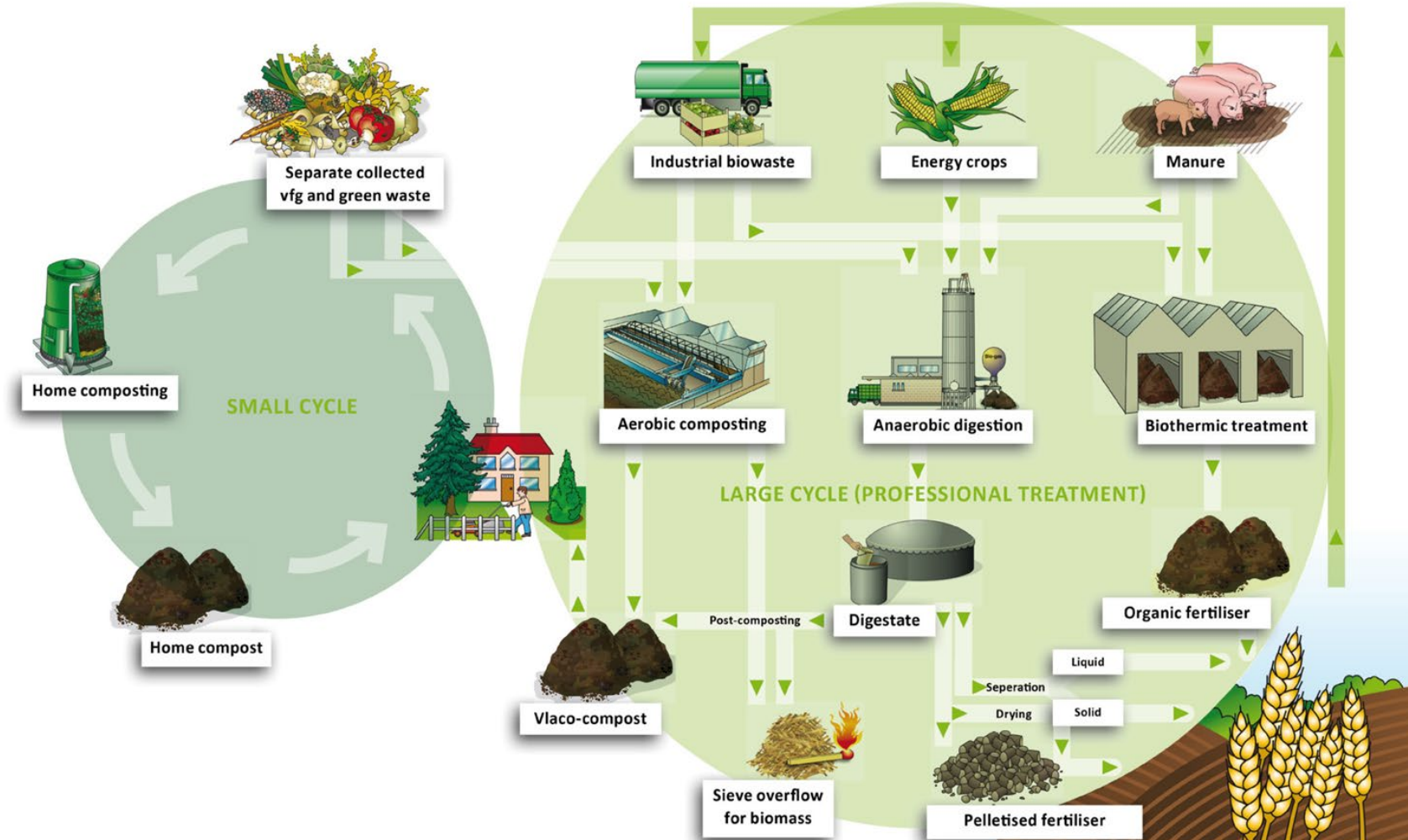
Organic Waste Policy in Flanders

A 2-fold approach

Centralized 'processing'
The Large cycle

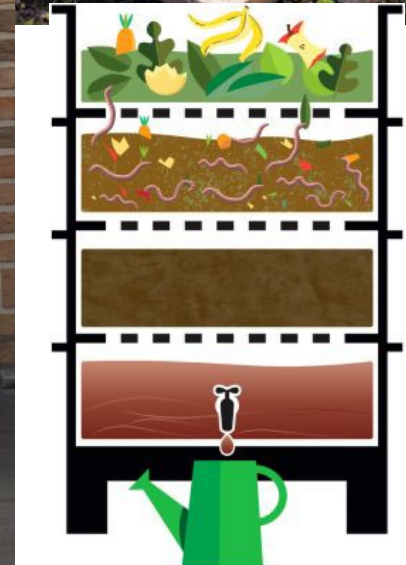
&

Decentralized 'processing'
The Small Cycle



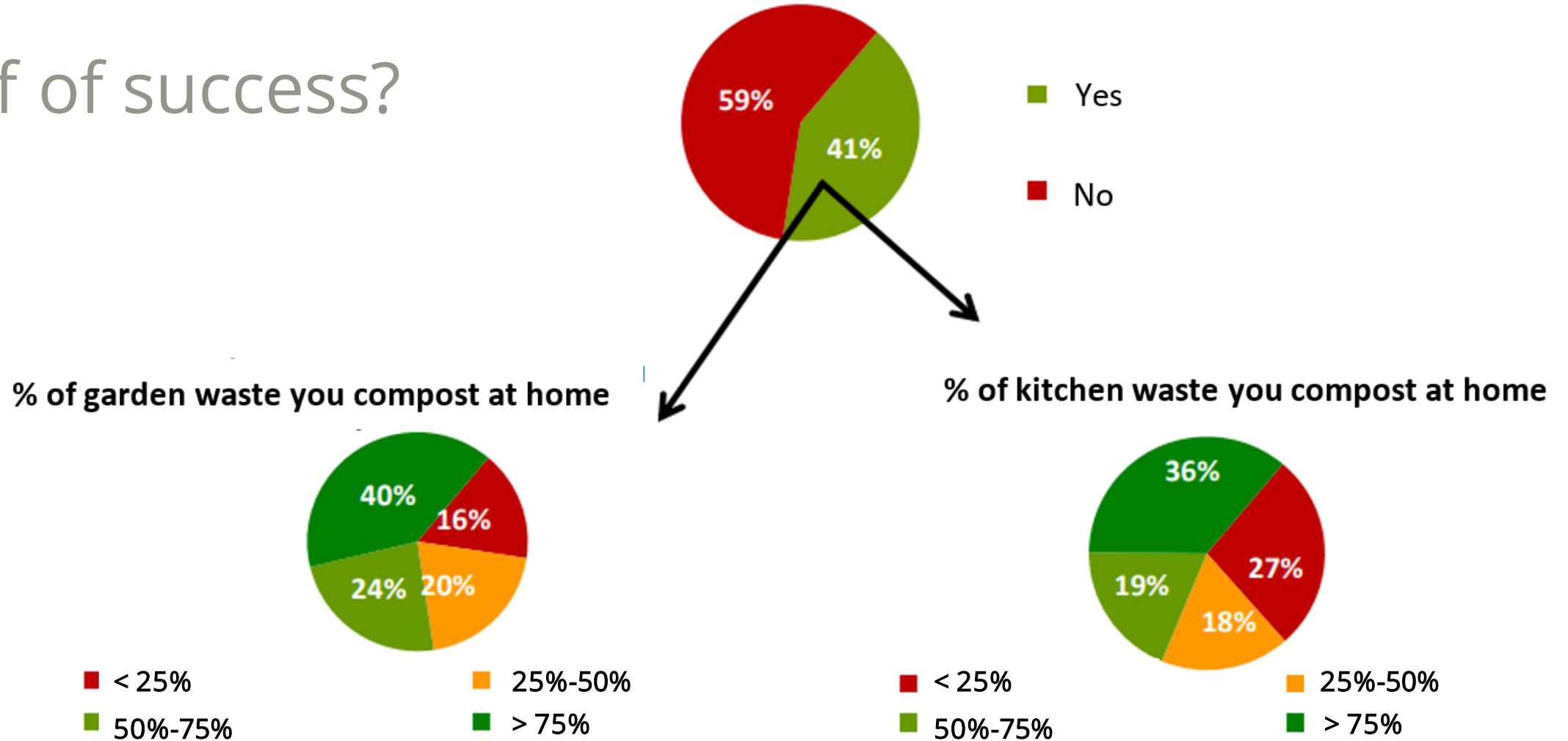
Composting at home

- Sorting out recyclable **bio-waste** from **households** at the source
- GP running **since 1997**
- Reduce residual waste
 - Advantages on individual level: save money & generate organic compost for garden
 - Advantages on systemic level: save money & **decrease CO2 emissions**
- Main stakeholders
 - Public Waste Agency (OVAM)
 - Intermunicipal waste company (IVAREM)
 - 10 municipalities in region Mechelen
 - Vlaco npo
 - Citizens of Mechelen
- Support in the form of
 - Information (website, manuals, brochures, videos, info sessions & workshops)
 - Practical advice (with help of Master composters)
 - **Subsidies** for compost bins from Flemish government (OVAM) - ended in 2022, but city of Mechelen remains to support the practice



Composting at home

Proof of success?



Composting at home

Proof of success?

Biowaste

- 55,3% via selective collection + composting = ±675.000 tons of biowaste;
- **23,9% via home composting = ±290.000 tons of biowaste;**
- 21,8% via residual collection = ±248.000 tons of biowaste can be found in residual waste.

Total = 100% : ±1.213.000 tons

“Do I do it myself, or do I have it done”: by correctly informing and pricing we achieved 2 co-existing systems that complement each other: home composting vs. composting 'elsewhere'

Composting at home

- Resources (Flanders)
 - € 42 760 subsidies (2021-2022)
- Results for Mechelen
 - ± 750 purchased compost bins (~750 households)
→ excl. DIY compost bins!
 - Worm bins less popular
- Transferable to other regions
 - Reasonable sized gardens (compost bins)
 - Importance of central point of contact & continuously inform/educate

2021-2022	City Mechelen	Other municipalities	Subsidy (€/unit)	Total cost (€)
Small compost bin	473	527	12.36	12360
Large compost bin	270	680	32	30400



Thank you!

www.interregeurope.eu/CITISYSTEM