



HERICOAST

Interreg Europe



European Union
European Regional
Development Fund

Natural and Cultural Heritage in Coastal Regions

Alana Green

Executive Planner, Donegal County Council

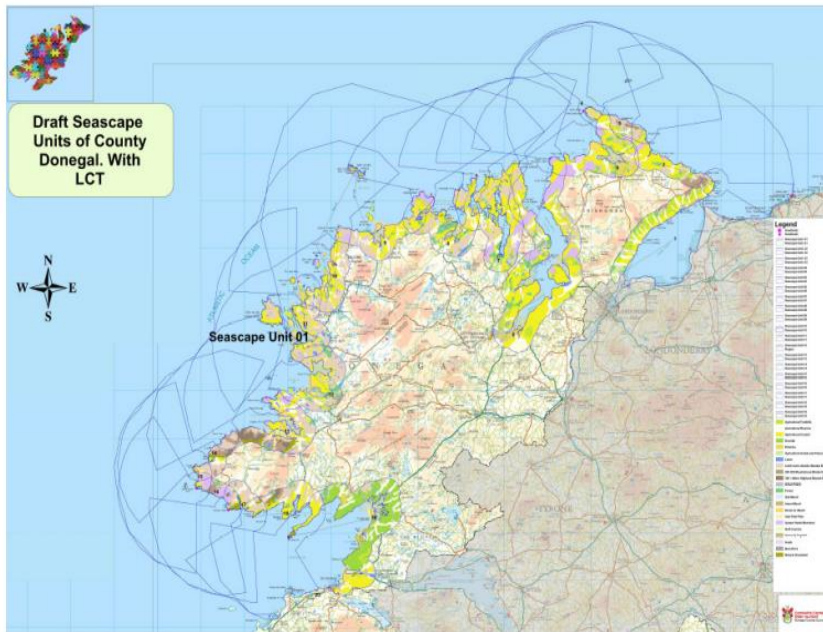
agreene@donegalcoco.ie



Comhairle Contae
Dhún na nGall
Donegal County Council

27th October 2022

SEASCAPE CHARACTER ASSESSMENT



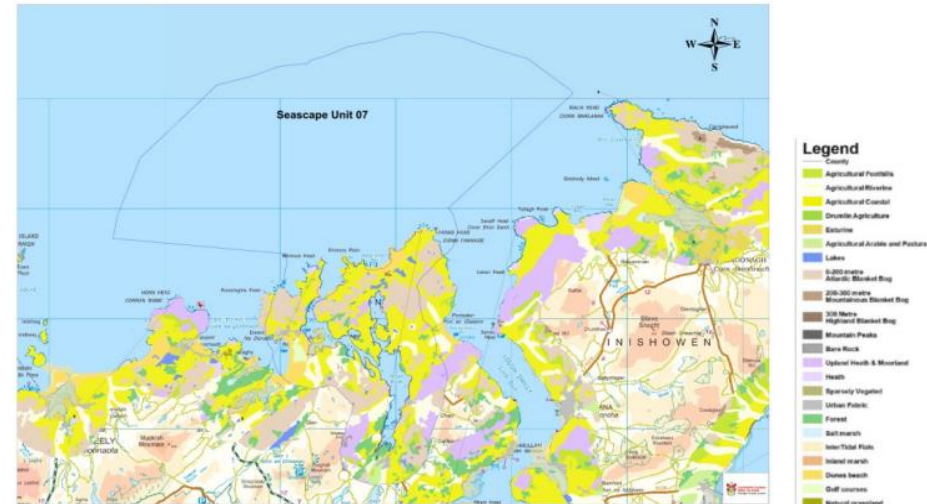
- Spatial layering of coastal data sets
- 19 Seascape Character Units identified from headland to headland, 15km Seaward and 10km inland.
- Separate, parallel and reiterative process to the Landscape Character Assessment in Donegal.
- Can also be a stand alone assessment.
- In excess of 40 spatial data layers include: geology, biodiversity, cultural heritage, coastal landuse, landscape character type and settlements as examples.

SEASCAPE CHARACTER UNIT- what does it consist of?

Narrative of each unit

- Coastal landcover
- Intertidal Area
- Characteristics of Sea
- Hinterland landform and Landcover
- Inter-visibility between Seascape Units
- Lighting
- Key Uses
- Biodiversity
- Cultural Uses

Interactive Mapping

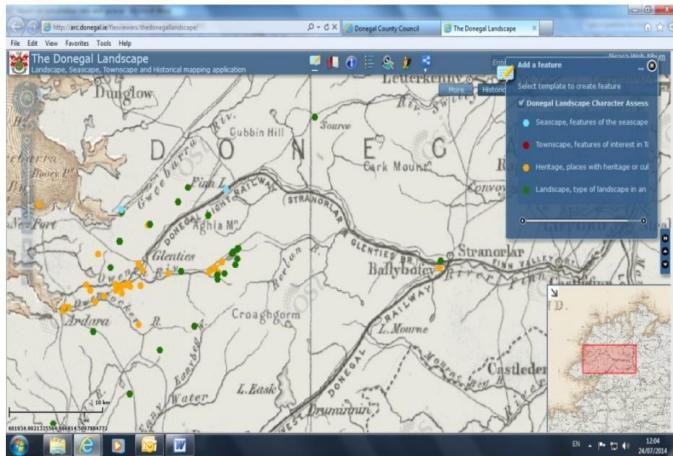


SEASCAPE CHARACTER ASSESSMENT: how is it useful?



- Uniformity of data and therefore a robust and consistent evidence base.
- Easily evaluated and objective assessment.
- Tool to examine patterns such as clustering of heritage types.
- Used to inform:
 - a. Policy formulation
 - b. Decision making,
 - c. Baseline and background evidence for projects (such as funding applications)
- Collates all coastal heritage data and information within one assessment

SEASCAPE CHARACTER ASSESSMENT: how it is developed?



Area	No. of Characteristic Areas	Name of Characteristic Area	Number of Historical Sites	Number of Historical Monuments	Number of Historical Buildings	Number of Historical Structures	Number of Historical Sites	Number of Historical Structures	Number of Historical Buildings	Number of Historical Structures	Number of Historical Sites	Number of Historical Structures	Number of Historical Buildings	Number of Historical Structures
Landscape with 12 Buildings	2	Donegal	29	10	10	10	10	10	10	10	10	10	10	10
Landscape with 12 Buildings	3	Donegal	54	10	10	10	10	10	10	10	10	10	10	10

Team

- Spatial planner (full time for 1 year)
- GIS specialist (30% for 1 year)
- Heritage architect (50% for 1 year)
- Administrative staff (50% for 1 year)

Significant resourcing:

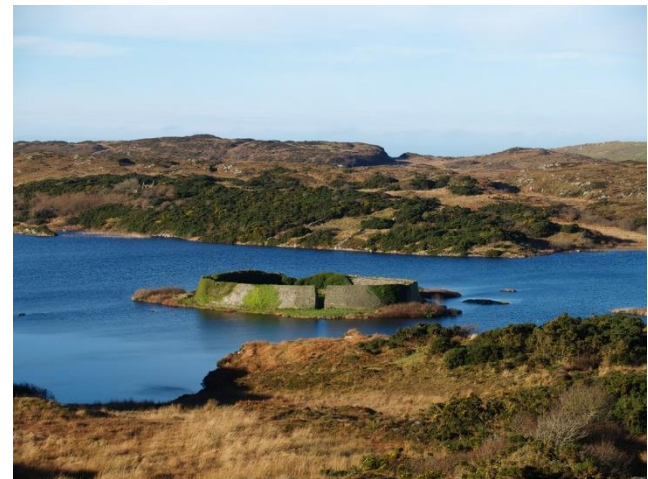
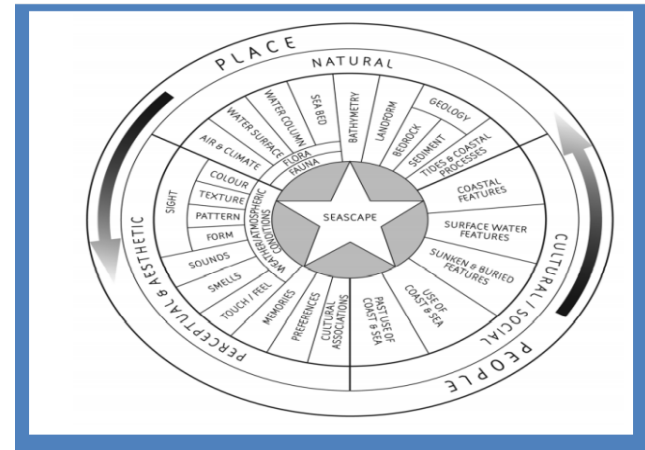
- Desktop analysis
- Site survey work
- Public participation
- Collating data

1 year project

Prepared in-house by Donegal County Council.

SEASCAPE CHARACTER ASSESSMENT: Transferability

- Transferable Methodology
- Variable Component Parts
- Lead partner of the HERICOAST project, Vest-Agder choose this as Best Practice Example securing extra funding to prepare similar (but smaller scale) assessment in their region of Norway.
- Baseline mapping is fundamental to the process
- Mitigates against decision making on single sector base
- Holistic and specific information



SEASCAPE CHARACTER ASSESSMENT: benefits and conclusion



Informs and provides an objective and informed evidence base for :

- Cross-sectoral knowledge exchange to inform future intervention and assessment opportunities.
- Informed Policy Formulation.
- Informed decision making.
- Adaption and further development to inform future projects and plans.
- Ability to change as and when new data sets and/or improved datasets become available.



HERICOAST

Interreg Europe



European Union
European Regional
Development Fund

Thank you



**Comhairle Contae
Dhún na nGall**
Donegal County Council



Project smedia